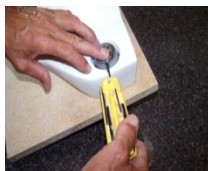


Installation of the 8" Suicide Resistant Faucet



Norva Plastics, Inc
1-800-826-0758
In VA: (757) 622-9281
Fax: (757) 623-2859

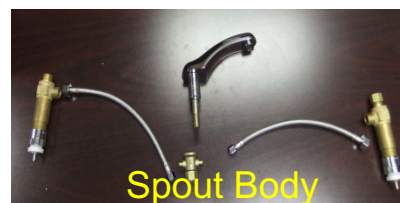
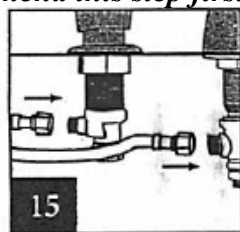
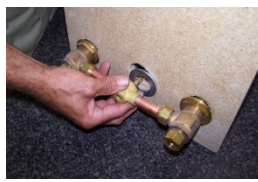
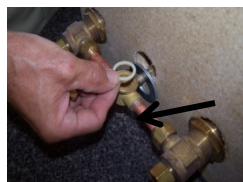
Recommendation: We highly recommend a qualified plumber install your 8" faucet to ensure it is installed properly and without any leaks. Please note that your faucet shipment contains one pre-assembled to a shipping plate and can be taken apart very easily. **Caution:** When removing the faucet from the shipping plate, keep all the pieces of the faucet together so that when you reassemble it on the sink there will be no parts missing. We recommend installing this faucet last so that you have an example of an assembled faucet. *If you have any questions about the assembly of the faucet, please don't hesitate to call Norva Plastics Inc.*

1. To remove it from the packing material, loosen the center pipe from below and remove the faucet handles using an Allen wrench. Once the handles are removed, the faucet will slip off the packing board.



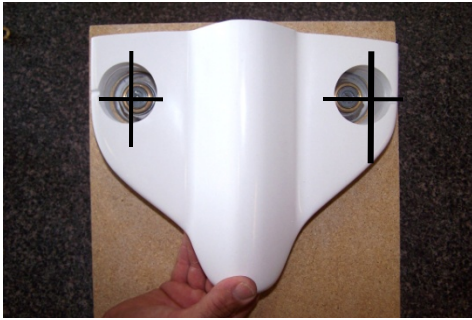
Note: Your faucet was customized to fit the exact model of sink at your facility. However like any other casted porcelain product, there maybe imperfections and you might have to adjust the contour of the faucet by sanding the back with an #80 grit orbital sander. To make sure you get a tight fit against the backsplash, take your time in the sanding process and constantly check the faucet fixture as you sand. In most cases, sanding will not be required.

2. Before you start installing the faucet fixture, check to make sure it fits properly against the backsplash by installing the faucet fixture in the sink. (See Note) *We highly recommend this step first before securing the faucet to the sink.*

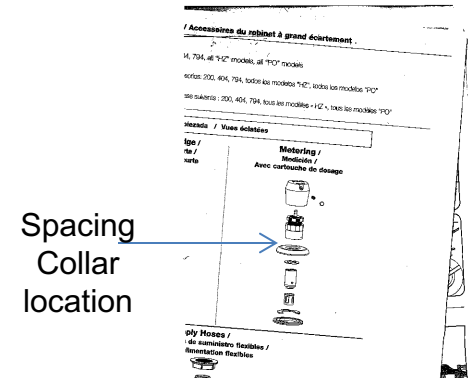
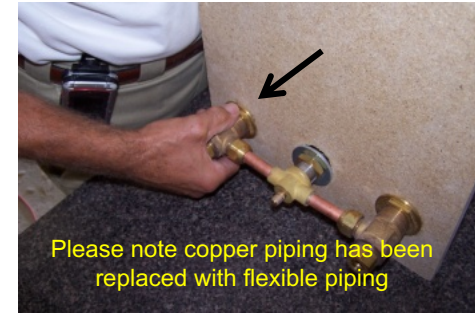
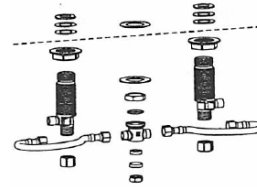


Please note the latest version of the faucet now has flexible piping which allows for easier installation.

3. Prior to installing the faucet, familiarized yourself with the Chicago Faucet instructions (schematics) and Norva Plastics. To install the faucet, thread the spout body pipe through the underside of the sink. Once in place, from the top, slide the white plastic spacing collar over each threading and secure in place with the chrome flat-threaded ring. Before connecting the spout body, make sure the gasket is seated in the center spout pipe (see photo) before securing it.



4. Before tightening up the plumbing, make sure the faucet is centered in the holes . If they are not when it is completely assembled , the faucet handles will not function properly.
5. **Make sure all fittings are secured using the proper plumbing tools to prevent leaks.**



6. Once you have center the faucet handles and tighten the cross-connect piping, make sure the cartridge are inserted in the faucet handle receiver with the gray side up as seen in the above photo.



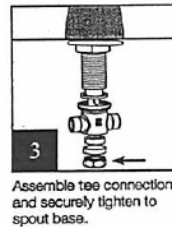
7. Before installing the top section of the faucet handle, make sure this white gasket is installed first. Please note the gasket markings indicate which side the gasket goes into the fitting.



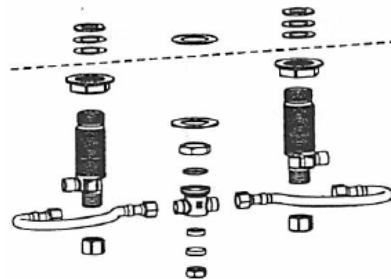
8. Install the top portion of the handle assembly into the receiver as seen in this photo. **Make sure all fittings are tighten with the proper plumbing tools and not by hand.**



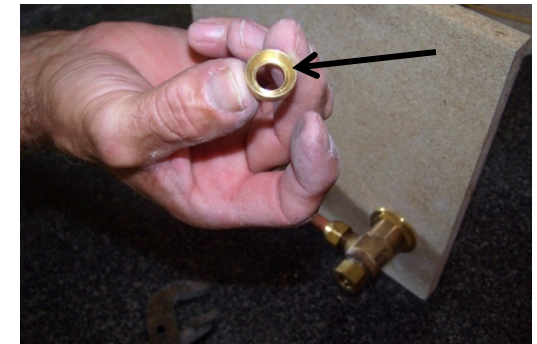
9. Loosen the set screw on the handle and slide it over the valve assembly. Push down on the handle cover before tightening the set screw



10. Slide the washer over center steam.



11. Slide the coupling over the washer and install the brass nut and tighten with wrench.



12. Make sure the faucet handles are still centered in each hole. Push down on each handle to ensure they move freely up and down. If not, you need to loosen the pipe fittings to readjust.

13. Once faucet is secured in place and has a tight fit against the backsplash, caulk with a silicon sealant between the backsplash and the fixture to ensure there are no gaps or hanging points. **Allow to dry before the patients have access the bathroom.**

